

Cancer... Beat it!



---

[www.WilmsFoundation.com](http://www.WilmsFoundation.com)

Wilms Cancer Foundation: Incorporated Charity #S0072415

Address: 2486 Gammon Road, Naramata, British Columbia, Canada, V0H 1N1.

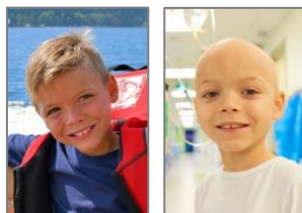
© COPYRIGHT 2020 ALL RIGHTS RESERVED.

Wilms Cancer Foundation™



## Who are we

The Wilms Cancer Foundation, is a charitable organization, inspired by 9-year-old William Hodgkinson, to support and represent the needs of children, families and health care organizations affected by the childhood kidney cancer 'Wilms'.



## What is 'Wilms'

Wilms (or 'nephroblastoma') is the most common type of kidney cancer in children with about 1 in 10,000 diagnosed with the disease each year in North America. It begins in the womb with the tumour growing on the kidney and the most common symptom being a sudden swollen stomach. Eventually the tumour becomes much bigger than the kidney itself and both usually require removal.

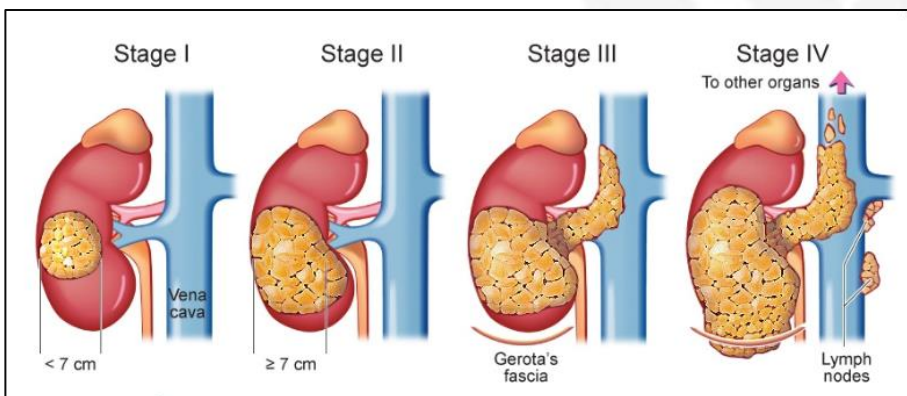
The disease has a good survival rate if detected early but if diagnosed late the cancer can be fatal, spreading to the lungs, liver or bones. Sadly, many like William go undiagnosed for years and face dismal survival rates. They require extensive, life-threatening treatment including chemo & radiation therapy and surgery.

## Every Parent's Nightmare

Complaining of nothing more than a 'tummy ache' on the way to school, William was diagnosed with stage 4/5 Wilms cancer at just 7-years-old. An active little boy, tests discovered a massive tumour on his kidney and a further eight tumours in his lungs. He spent a year in treatment, had multiple operations, and protracted chemo & radiation therapy. He finally, beat the odds only to suffer a relapse one-year later with the emergence of two new lung tumours.

**Importantly, early diagnosis would have prevented this pain, stress and heartache (as well as the unnecessary strains on our healthcare system).**

Wilms Tumor Staging: 5yr. Survival Rate (Diffuse Anaplastic)					
Stage	Stage I	Stage II	Stage III	Stage IV	Stage V
Survival %	75-80%	80-85%	50-70%	30-45%	65-70%



## Objective

Our objective is to establish a national program of awareness, education, advocacy, early detection and treatment to tackle the spread of this devastating cancer and to ensure that children, like William, and his family are not faced with the same life-threatening situations.

## Advocacy Early Detection Education Fundraising Grants Treatment Support

We also seek to support children, family and organizations as they tackle Wilms through initiatives such as our 'Dream-Making' program, which provides financial support to lighten the emotional and financial burden they face at time of crisis.



## Support

Children like William (and his family) should never have to face the ordeals and life-threatening situations that he has been confronted with at such a young age and, importantly, they don't need to.

Through numerous WCF programs there is an opportunity to ensure early detection of this tragic disease and to relieve the emotional and financial burden, suffered by families in these tragic situations. However, we cannot do this alone and we rely on the ongoing support and partnership of individuals and organizations to help us continue providing our services because without them children like William and hundreds of families like his will face desperate situations.

If you or, someone you know, is in need of information & emotional/ financial support or would like to discuss making a tax-free financial donation in order to provide immediate support to a child and their family, please contact us right away.

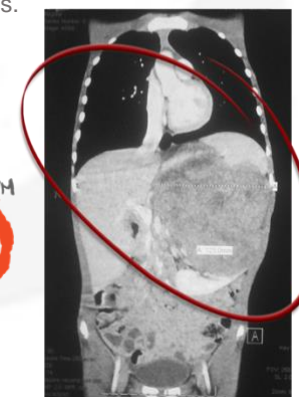
Telephone: +1 (778) 514 5000

email: [info@wilmsfoundation.com](mailto:info@wilmsfoundation.com)



**Don't wait, a child needs your support... Now !**

**Note\*** All inquiries are treated in the strictest confidence.



Presenting: Abdominal and lung Wilms tumor